

NACADA

National Academic Advising Association

Region 6 Conference
May 6-8, 2009



Fargo/**M**oorhead

First Year to **M**astermind

“Best Practices that Bring Advisors and
Advisees to their Full Potential”

Hosted By:

Concordia College, Moorhead

Minnesota State University Moorhead

Minnesota State Community and Technical College

North Dakota State University

Welcome to **F**argo/**M**oorhead and the 2009 Region 6 Annual Conference!

Conference Attendees,

We are so pleased to have you joining us in **F**argo/**M**oorhead for our Region 6 Annual Conference: **F**irst Year to **M**astermind: Best Practices that Bring Advisors and Advisees to their Full Potential. We have been planning all year to bring you a conference filled with interesting sessions and time to network with colleagues in our field. If you are a **F**irst year advisor or a **M**aster advisor who has been working in the field for years, we hope to provide you with professional development opportunities that bring you and your advisees to your full potential. Whether you are working with **F**irst year students, **M**aster level students, or anywhere in between, we hope you take new information home with you!

We also hope you take advantage of the **F**abulous **M**eals event on Thursday evening as a time to meet new people, reconnect with friends, relax, and enjoy the interesting local cuisine of the **F**argo/**M**oorhead area. There is still time to sign up at the hospitality table.

We have a special contest this year. Find the number of **F**/**M**s that are highlighted in the conference program and then register your guess to win one of our **F**un **M**arketing baskets from the **F**/**M** area businesses at the end of the conference. Please consider purchasing from the businesses that supported the conference this year; their websites are listed at the end of the program.

Please let any of us know if there is anything we can do to help make your conference experience more enjoyable as you explore best practices in advising in the **F**/**M** area!

2009 Region 6 Conference Planning Committee:

Amy Sannes, Concordia College

Kimberly Vess Halbur, North Dakota State University

Janet Haak, Minnesota State University Moorhead

Carolyn Schnell, North Dakota State University

Claudia Simon, Minnesota State Community and Technical College

Tayt Rinehardt, Concordia College

Alissa Schell, Student Intern, North Dakota State University

Flood **M**anagement fact: The Red River flood stage is 18 feet. On Saturday, March 28, 2009 the Red River crested at a record 40.82 feet. The **F**argo/**M**oorhead area fought an epic flood. The **F**/**M** area is forever grateful for the efforts of the students, faculty and staffs of our area colleges and schools. It truly was a community effort that reached beyond the immediate area.

Introducing our Keynote Speakers.....

Opening Keynote

"Personal Professional Development: Maximizing Your Potential"

Dr. Charlie L. Nutt—Wednesday, May 6 @ 7:00pm



Charlie L. Nutt was appointed as the Executive Director of the National Academic Advising Association in October 2007. Prior to this he served as the Associate Director of the Association for five years. Additionally, he was Vice President for Student Development Services at Coastal Georgia Community College for nine years and Assistant Professor of English/Director of Advisement and Orientation for six years. He received his A.A. from Brunswick College, B.S.Ed. from the University of Georgia, M.Ed. and Ed.D. in Higher Educational Leadership from Georgia Southern University.

Nutt has vast experience in education. In addition to his fifteen years as a teacher and administrator at Coastal Georgia Community College, where he originated the college advisement center and orientation program that was awarded a Certificate of Merit by NACADA in 1995, he has taught English in grades 9-12, served as a department chair and assistant principal in a high school, and served as Director of Development and Admission at a private K-12 institution. Presently, he teaches graduate courses in the College of Education in the Department of Counseling and Educational Psychology. He has also been instrumental in the development of the NACADA/K-State graduate certificate in academic advising and several other NACADA professional development initiatives.

He served as conference chair for the 1994 Region IV Regional Conference and served on the NACADA Executive Board as Region IV Representative 1994-1996 and as Chair of the Two-Year College Commission 1996-99. He has served on the NACADA Awards Committee for five years and on several other ad hoc committees as appointed by the President. He was the national conference chair for the NACADA 2000 Conference in Orlando and served as President-Elect of NACADA for 2001-2002. He was the 2001 recipient of the NACADA Pacesetter Award. He also authored a chapter in the NACADA/Jossey-Bass handbook published in Fall 2000, a chapter in the NACADA monograph *Advisor Training: Exemplary Practices in the Development of Advisor Skills*, and co-authored the NACADA Advising Assessment Guide.

Nutt has presented at numerous state, regional, and national conferences on the topics of student success, academic advising, institutional effectiveness and assessment, retention, and advisor training and development. In addition, he has worked with numerous colleges and universities in conducting an evaluation or audit of their advising and student services programs as well as serving as a keynote speaker for in-service programs and conducting faculty training programs on many campuses.



Closing Keynote

"Drawn to Leadership"

Mr. Steve Stark—Friday, May 8 @ 11:00am

Steve Stark has traveled across the country before thousands of people of all ages with entertaining and unique presentations on a wide range of subjects.

Steve is also an award winning editorial cartoonist and journalist. He has illustrated three books and has appeared in, directed or designed over 75 plays and operas. He has appeared as Theodore Roosevelt live in 20 states as well as on The History Channel and National Public Radio.

He attended NDSU as an undergraduate student and currently resides in Fargo where he and his wife have two grown sons and a new granddaughter.

He says of all the roles he's played-being "Bumpa" is the best.

Wednesday, May 6

1:00-6:30pm Courtyard Registration & Pre-conference Sessions

Please sign up for the **F**abulous **M**eals dinner on Thursday night. Meet new people, reconnect with friends, relax, and enjoy the interesting local cuisine of the **F**argo/**M**oorhead area.

2:00-3:00pm Cedar NACADA Leaders: Hit the Deck Running – NACADA Leadership Training

Charlie Nutt, NACADA Executive Director; Terry Musser, NACADA Executive Board; and Pat Mason-Browne, Region 6 Chair

This session is designed for NACADA current leaders and members recently elected to serve in any leadership role within the association, either on a state, regional or national level and including commission and committee chairs as well as regional steering committees, or anyone interested in leadership in the Association. Participants will be provided with a brief background on the Association's governance model and an overview of their new responsibilities as a NACADA leader. Current and past leaders will be available to answer questions and give guidance on how they handle(d) their positions. Other members with an interest in future leadership roles within NACADA are welcome to attend to get an idea of how they might like to get involved.

2:00-4:00pm NBCC Credit Birch Session cost: \$20.00

What's Personality Got To Do With It? Using the Myers-Briggs Type Indicator (MBTI) to Maximize Your Advising Skills

Susan Anderson, University of St. Thomas; Darcel Brommer, University of St. Thomas; and Irene Dombeck, Normandale Community College

How do advisors reach their full potential when it comes to the relational aspects of advising? Knowing and understanding your personality type can help you discern how and why you approach students the way you do and can increase the likelihood of creating a meaningful advising environment. This program will provide participants with an opportunity to examine their advising skills within the framework of the personality preferences identified by the Myers-Briggs Type Indicator (MBTI). Participants will identify their strengths and weakness and then compare personality preferences to the essential "five C's" of an academic advisor: 1) competence, 2) confidence-building, 3) cordial, 4) credible, 5) creative.

4:10-5:00pm Cedar

Free to all participants Introduction to NACADA: First Time Attendee NACADA Orientation

Charlie Nutt, NACADA Executive Director; Terry Musser, NACADA Executive Board; Pat Mason-Browne, Region 6 Chair

The purpose of this session is for new NACADA members and new conference attendees to have an opportunity to meet and network with each other and with various NACADA leaders. In addition, participants will be provided an overview of NACADA and the benefits of membership, including professional development opportunities, quality publications, and additional networking opportunities. The session will be interactive with multiple opportunities for participants to network, learn and meet new friends and colleagues.

5:00-7:00pm Dinner on your own

Flood **M**anagement fact: MSCTC was the home for Moorhead's sandbagging operation; over 600,000 sandbags were filled, 5,000 volunteers worked, and over 20,000 volunteer hours were logged.

7:00-8:30pm Woodland North Opening Session - Welcome

Keynote Address: Dr. Charlie Nutt, Executive Director, NACADA – Personal Professional Development: Maximizing Your Potential.

8:30-9:30pm Woodland South Reception

Sponsored by Minnesota State Community and Technical College



Thursday, May 7

7:30-8:30am
Breakfast

Woodland South

8:30-9:30am

Concurrent Session 1

1A NBCC Credit Walnut
Get the Horse before the Cart: Conducting Assessment of Adviser Needs

Terry Musser, Penn State

Needs assessment is a systematic way of determining the current status of an organization. When someone decides to save time by eliminating this task, money and human resources are often wasted on implementing inappropriate or unnecessary solutions. A needs assessment can be proactive (i.e. to determine the possible cause or solution to decreased retention) or reactive (i.e. before there are negative indicators or identified problems). This workshop demonstrates the use of needs assessment using a case study conducted at Penn State with faculty and staff advisers. The process of developing and implementing this needs assessment will be shared and discussed as well as the results. Participants will brainstorm possible needs assessment methods/programs for their own institutional settings.

Flood Management fact: All four **F**argo/**M**oorhead colleges cancelled classes for two weeks to assist with sandbagging efforts.

1B Chestnut
Get Real - Making Advising Better than Reality TV

Chrystal Stanley and Michelle Laughlin, Drake University

Want a fun way to introduce old material? Looking for a way to get that information out to a diverse group of students effectively? Tired of students' eyes glazing over when you're presenting? Are you a fan of Reality TV? In this session, you will learn to use pop culture to present critical study skills, adjustment, and exploration information to students. Presenters will discuss the positives and negatives associated with non-credit, non-required seminars to address study skills and adjustment issues. Current research and literature will be discussed. Additionally, ideas and examples of programs will be provided along with a model for across-campus collaboration.

Flood Management fact: More than 2,400 National Guardsmen were deployed to help with the flood fighting.

1C Elm
Speed Majoring: Review Your Matches for Free

Dani Kvanvig-Bohnsack, North Dakota State University

Active learning is what I had in mind when I decided to design the career and major exploration event "Speed Majoring: Review Your Matches for Free." Because I work almost entirely with undecided students in my first-year experience course, I wanted the career/major exploration portion of the course to be useful, yet fun. After reading about a similar event at another institution and talking with the event's coordinator, I decided to try something new. My "something new" was a spinoff of speed dating. In this session, I will summarize the details of the "Speed Majoring" event and provide all the materials that I used to create the event. Participants are encouraged to provide feedback and share other innovative advising activities and events.

Flood Management fact: Between **F**argo and **M**oorhead over 7 million sandbags were filled.

1D Cedar
Advising to Retain the First-year Student

Joan Krush, University of Nebraska-Lincoln

Student retention is often considered a department if not a university responsibility. In this session, we focus on a critical question, "What range of roles and behaviors can advisors use to facilitate student retention?" The discussion will specifically focus on the combination of advising strategies and other campus resources that can aid in the retention of first-year students.

Flood Management fact: Over 100,000 people volunteered during the flood fight.

1E Birch
Advising Upgrade: Installing Technology into Everyday Advising

Josh Nichols, Dickinson State University

How can advisors match the Net Generation's momentum through the use of technology? The challenges include not only advisors' unfamiliarity with technological options that are second-nature to Net Gen students but also Neomillennial students' preference for the speed and convenience of technology over the traditional methods of advising. This is not to suggest the elimination of face-to-face advising; the mission is to translate traditional advising methods to a language more easily understood by Net Gen students through the technology that is so much a part of their lives. You will leave with a plan to integrate technology with your current advising methods, methods to maximize your time, and a better understanding of how to speak the language of the Net Generation.

Thursday, May 7

9:45-10:30am

Woodland North

General Session

NACADA Update and Feedback Session

Charlie Nutt, Terry Musser, Pat Mason-Browne

This informal discussion provides a forum for attendees to visit with NACADA leaders and members of the Executive Office staff regarding the Association's many initiatives and programs and to give participants an opportunity to provide feedback and ask questions. Our board member will also recognize national award winners from Region 6.

10:30-11:00am

Courtyard

Break—Join colleagues for a light snack

11:00–Noon Concurrent Session 2

2A

NBCC Credit

Birch

From Combat to College: Research on the Mental Health of Returning Veterans

Nicole Lovald, Minnesota National Guard and Carlie Gebauer, Capella University

As combat veterans are returning to colleges in record numbers are you equipped with the information, skills, and resources to support them in their academic pursuits? This presentation will cover new research on veteran needs as they reintegrate to society and academic institutions. Learn more about what you can do to assist with their re-entry and transition following a deployment to a combat environment. Participants in this session will gain an understanding of the mental health needs of returning veterans and will be provided with strategies that you can use in your work with student veterans.

Flood Management fact: The Red River rose 23 feet in just 7 days.

2B

Chestnut

The Many Faces of Community and Technical College Students

Terisa Ames-Ohnstad and Kate Johnson, Minnesota State Community and Technical College

A student panel discussion made up of ELL, first generation, non-traditional age, on-line, students of color, and single parent students who attend a community and technical college. Discussion will address best advising practices from the students' point of view and experiences. Time will be allotted for questions from session participants. The purpose is to shed some light on the tailored needs and experiences of specific student populations who enroll in community and technical colleges. Objective is for session participants to gain a wider view and appreciation in serving specific populations.

2C

NBCC Credit

Elm

What if I don't feel Like a Mastermind? Working with Students who Need More than You Can Provide

Heidi Frie, Concordia College

Have you ever had an uneasy feeling after an advising session with a student? Have you ever been left wondering what was really going on? Advisors often meet with students who are concerning for one reason or another. They have academic, career or personal concerns that need more attention than an advisor can provide. This session will help outline ways to recognize when a student needs assistance beyond advising. Skills to successfully respond to and refer students who need additional assistance will also be presented.

Flood Management fact: The Red Cross had 44 emergency response vehicles driving around Fargo-Moorhead delivering food and drinks to flood fighters.

2D

Cedar

Survival Skills – 101

Tracey Hammell, Minnesota State University-Mankato

Many freshmen enter college with the idea that they are prepared for success. However, many find themselves lacking in time management, study skills, increased anxiety about their new environment, and they struggle finding the support through faculty, staff and students that they need to be successful. Helping students overcome these transitions is something that we all strive for during the fall term. This presentation will discuss a pilot program that was developed to help freshmen students in science, engineering and technology majors ease their freshmen transition. The presentation will provide an outline of a successful low budget pilot program and ideas on how to structure a similar program at other institutions.

2E

Walnut

Stressing your Noodle? Try Moodle!

Lisa Kittelson, University of Minnesota Duluth

Do you feel crunched for time during advising appointments? Do you wish that students came more prepared for the advising appointment? Do you find programmatic advising taking up a large portion of your advising appointment? Come explore how a pre-advisement online module might help you when advising. The purpose of this workshop is to look at the impact of integrating a pre-advisement module with advising appointments. This interactive session will provide an opportunity to start brainstorming, look briefly at the process of development using an online course management system, explore the impact of utilizing the pre-advisement module, and discuss student feedback.

Thursday, May 7

12:10-2:00pm

Woodland South

Lunch and Region Business Meeting

Sponsored by Concordia College

2:00-3:00pm

Concurrent Session 3

3A

NBCC Credit

Walnut

Scaling the Sophomore Slump: Initiatives to Facilitate Major/Career Exploration for Second Year Students

Katelyn Romsa, Sara Granberg-Rademacker, and Gretchen Stahl, Minnesota State University Mankato

Sophomore is the new freshman. After decades of focusing efforts on first-year student retention, institutions are increasingly realizing that sophomores may be a population more vulnerable to attrition than their first-year counterparts. Undecided (or "choosing & changing") sophomores may be particularly at-risk, as they search for an academic home. This session will focus on "sophomore-slump" related issues as they pertain to major/career exploration.

3B

Cedar

Networking Learning Communities in Engineering: Development of Common Outcome Objectives for First-Year Students

Kristin Mauro, Iowa State University

The purpose of this presentation describes the formation and operation of networked learning communities within a college of engineering at a large, midwestern university. Individual coordinators from the thirteen individual learning communities in the college met over the course of a year with the objective of improving student learning. Key success factors for the networked learning communities were found to be similar to factors identified in earlier studies of community networks. One of the first formal activities of the networked engineering learning communities was the development of common learning outcomes and the assessment of those outcomes. As a result, we see that students are more engaged in the learning community but they are also being retained at a higher level than in semesters when the learning community was not a part of the required curriculum.

Flood Management fact: The Red Cross brought in 848 staff from 45 different states to help with the flood fight. 93% of these staff members were volunteers.

3C

Elm

Building Critical Skills for a Knowledge Society

Sue Zurn and Kathleen Stompro, Concordia College

How do we really help students prepare for an ever-changing future? How do we help students understand the value of their education and how to successfully transfer liberal arts skills (analyzing, negotiating, teamwork, research) to the workplace? In today's competitive job market, students who are able to identify and articulate skills attained through a liberal arts education and an experiential learning experience can increase opportunities for employment. This session will highlight strategies for helping students identify and market their skills and will provide a model for successful cooperative education and internship experiences.

Flood Management fact: Concordia distributed 43 Jiffy Johns on campus during the water shut down prior to the mandatory evacuation of the campus.

3D

Birch

Writing for NACADA: The NACADA Journal, Academic Advising Today, and the Clearinghouse

Charlie Nutt, Executive Director, NACADA

There are many opportunities to write for NACADA. Authors from the ranks of advising practitioners, faculty advisors, researchers, and theorists appear in NACADA publications. While NACADA publishes books, video-dvd-cds, and brochures, the primary focus in this session will be to describe the purpose, content, writing guidelines, and acceptance process for the NACADA Journal, Academic Advising Today and the Clearinghouse. Whatever your interests in professional writing, this session will help you understand the writing opportunities within NACADA.

3E

Chestnut

Getting to Know the Online Learner: Tips on Preparing Advisors for the Future

Rebecca Graetz and Leane Perius, Minnesota Online

Principles of face-to-face advising cannot be transferred seamlessly into the world of online education. Not only is the delivery method for online education different from campus-based classes, but online students are a diverse group that have different needs compared to more traditional campus students. It is clear that in order to effectively support new online students we have to adjust our advising techniques and tools. This presentation will examine the contrasts between campus and online learners, share online advising tools that help support the online learner, and open up discussion as to how advisors can become better prepared for the online education boom.

Thursday, May 7

3:00-3:30pm

Courtyard

Break—Join colleagues for a light snack

Sponsored by
Minnesota State University Moorhead

3:30-4:30pm

Concurrent Session 4

4A Chestnut GRADES: GPA Realtime Advising and Estimating System: Electronic Tools for Advising

Trinh "Fred" Carpenter, Metropolitan State University

Metropolitan State University, a commuter based institution based in the Twin Cities region, seeks to provide as much information as possible to students through advising to maintain satisfactory academic progress, including computing GPA and completion rates. This information is communicated by multiple means including personal, electronic, and hard copy.

To assist advisors in their ability to track student progress, a new electronic tool, GRADES, enables advisors to not only monitor the status of a student but to also forecast outcomes based on a path of action. The forecasting capability of GRADES aids the advisor in providing strategic academic planning.

4B NBCC Credit Walnut Vocation: Exploring Purpose, Calling, Hard-wiring, etc.

Jay Thoreson and Kelly Meyer, Concordia College

The method of helping students explore career paths based on personality, skills, interests, and values has long been the standard of career counseling. Recently, with the financial encouragement of such groups as the Lilly Foundation and the popularity of purpose oriented books within the marketplace, the concept of "vocation" or a "calling" has entered the conversation as a renewed focus at many private and public institutions. Understanding how to approach this topic and engage a student may be uncomfortable; however, avoiding this critical issue because of our discomfort may be doing our students a great disservice.

This hands-on session is designed to help the advisor explore their own sense of vocation and also provide them with practical tools to help students examine their own calling.

Flood Management fact: Volunteers for the city of Moorhead were fed and dispatched from the MSUM campus.

4C NBCC Credit Birch When Smart Students Fail: Emotional Intelligence and Academic Success

Deborah Seaburg, Minnesota State University Moorhead

Advisors see many students who are capable of succeeding in college, but whose difficulties with time and stress management, establishing relationships, or making wise decisions adversely affects academic success. Evidence suggests strong Emotional Intelligence (EI) is an important factor in college success and student persistence. Self-awareness, interpersonal effectiveness, adaptability, stress tolerance, and optimism are EI skills that impact successful functioning in school. In particular, the first year of college is a transitional time when these skills can make the difference between success and failure. This session reviews research supporting the relationships between EI and academic performance and first year success. Programs and activities to enhance student emotional intelligence will be demonstrated.

Flood Management fact: The Salvation Army served 168,000 sandwiches and the Red Cross served over 38,000 meals to flood workers.

4D Cedar Put Some WHOOSH into your Advising!

Nicole Letawsky Shultz, University of Minnesota - Twin Cities

Wouldn't we all love to have more time to read the current literature in our field, or information outside of our field that can be useful for our professional practice? This session will explore influential works from within and outside of the academic advising and student affairs field, with the intent of engaging participants in the practical application of the material. Come find out what whoosh, the four agreements and learning partnerships have to do with your work!

4E Elm Was the Semester an SOS?

Kristi Bitz, Greta Kylo and Neil Race, Mayville State University

In an effort to increase student retention, Mayville State University (Mayville, ND) tried a radical approach. All freshmen were encouraged to enroll in a revamped freshman seminar class. The instructors for the course also served as the students' advisors. The presenters will discuss the set-up of the class, experiences of instructors and students, feedback from student and instructor surveys, success rates, and plans for future classes.

5:30 Start

Fabulous Meals

A time to meet new people, reconnect with friends, relax, and enjoy the interesting local cuisine of the **F**argo/**M**oorhead area.

Friday, May 8

7:30-8:30am
Breakfast

Woodland South

8:30-9:30am

Concurrent Session 5

5A

Walnut

First-Generation College Student Advising Interest Group

Susan Anderson, University of St. Thomas and Judy Vopava, University of Iowa

Want diversity? Then define what a First-Generation College Student looks like. Some are 18 years old; many are in their 30's. Some are high achievers, some are returning to higher education, some are tired of dead-end jobs, some are fresh out of high school and away from home for the first time. Being the first in the family to do anything is a heady, exciting, scary proposition; but entering the confusing arena of a college education is a complex venture best not undertaken alone. One thing is clear – these students need the help of a good advisor! Come join the First-Generation College Student Interest Group as we explore the issues and answers best suited for these students.

Flood Management fact: As of April 16, National Guard had contributed 28,912 working days to the **F/M** area.

5B

Cedar

Advising First Year Students: Partnerships, Peer Educators, and Academic Programming in the Residence Halls

Elizabeth Kalinowski and Julia Roland, Minnesota State University Moorhead

A large part of the advising profession is providing information to students about campus life, policies and student responsibilities. Beginning in the Fall of 2008, the Academic Resource Office at Minnesota State University Moorhead (MSUM) started an outreach program for first year students living in the Residence Halls. We partnered with Orientation and Transitions and Housing to provide relevant academic programming for students on their individual floors. Peer Advisors presented important information to students on High School vs. College, College Survival, Advising and Registration, and Finals. Our presentation will describe the program implemented at MSUM and the students' initial response to the program.

Flood Management fact: The **Fargo/Moorhead** area had over 20 miles of dikes in the city.

5C

Chestnut

Student-Athletes: Privileged or Pressed?

Casey Peterson, Kelli Layman and Jessica Osebold, North Dakota State University

We will take a broad look at the culture of college athletics and its impact on the student-athlete academic experience. The role of the advisor in assisting student-athletes will be the central component of the conversation. We will also explore myths, realities, and "privileges" that surround this group of students. This is a flexible, discussion-based session led by academic support professionals. We will provide viewpoints from the roles of coach, academic support professionals, and counselor. The discussion is meant to be applicable to advisors at all NCAA and NAIA membership levels.

Flood Management fact: Flood t-shirts which read: United We Sand; Sandbag U; and Influencing the affairs of the world, one sandbag at a time! are worn with pride around the **Fargo/Moorhead** area.

5D

NBCC Credit

Birch

Getting Past the "Things are Fine" Stage: An Assessment Tool to Spark Meaningful Conversations with Advisees

Amy Sannes and Heidi Frie, Concordia College

Advisors are often challenged with the task to find ways to assist students in academic difficulty. These students may not be aware of what they need or how they might improve their performance, and are at great risk for dropping or failing out. Advisors benefit from an effective assessment tool to identify areas of need and devise efficient intervention plans for improvement. This session will describe an assessment tool, College Learning Effectiveness Inventory, and the follow-up intervention model for planning student success. This session will provide hands on demonstration of how to utilize this system with case-study examples and discussion of outcome results.

5E

Elm

Online Option for Fulfilling First Year Seminar

Patricia Venette and Carolyn Schnell, North Dakota State University

For students who fail to complete a required first year seminar in a timely manner, North Dakota State University has created an online version of the course. This presentation will address the manner in which a required classroom experience, designed for new student transition, was successfully converted to an online course addressing the same topics from an advanced perspective. Assignments, exams, discussions, and assessment are completed through the use of BlackBoard learning system.

Friday, May 8

9:45-10:45am

Concurrent Session 6

6A Elm Constructing the Capstone Course: Helping Advisees Prepare for Life after Graduation

Melissa Vosen, North Dakota State University

At NDSU, seniors graduating with a Bachelor of University Studies must enroll in University Studies 489, a one credit capstone course. This presentation will demonstrate how a senior capstone course, even for students with different backgrounds and goals, can help bring senior advisees together and prepare them for life after graduation. In this session, I will share lesson plans on how to help graduating seniors reflect on their college experience, articulate their career goals, and prepare for life after NDSU. University Studies 489 asks advisees to work together collaboratively, exploring and pursuing options for employment and/or graduate school. The lesson plans that will be shared are easily adaptable and can be used in any classroom, regardless of the subject.

Flood Management fact: The FargoDome was transformed into Sandbag U and housed the 24/7 sandbagging operation.

6B Walnut Advising Using Today's Technology: Lost and Found in Florida

Connie Eggers, North Dakota State University

The Millennials we assist in our educational settings have much to teach us about how they communicate, learn and connect to information, people and ideas. Let's jump aboard! Web 2.0? RSS? YouTube? Yes! You too can stop feeling as if you are lost in the fast paced world of technology and begin to use emerging technologies in your advising programs. Information gathered through attendance at the February 2009 NACADA Technology Seminar, "Advising 2.0: Utilizing Technology Effectively for Campus-wide Advising" will be highlighted through discussion and demonstration. As time allows, participants may share how they are currently utilizing technology in their work with students.



6C NBCC Credit Birch Minding Health, Mastering Stress

Jennifer Endres and Danielle Tisinger, University of Minnesota - Twin Cities

Have you ever had one of those days when the thought of having one more thing on your "to do" list will send you permanently to la-la land? Have you seen students in a similar situation? Stress is a constant for student services professionals. This session will address not only our personal stress, but also that of our students and what happens when the two collide. Learning the "why" behind stress-reduction techniques will help determine which strategy is most appropriate in a given situation, increasing your effectiveness with your students. Join us for a brief lesson in biopsychology and come away with new techniques and a wealth of knowledge to help you not only tame your personal stress demons, but also those of your students.

6D Cedar Teaching When Teaching Isn't Your Gig - Approaches to Working Outside the Normal Realm of Your Position

Jessica Kuecker Grotjohn and Nicole Letawsky Shultz, University of Minnesota - Twin Cities

Working in student services can provide individuals with infinitely diverse work experiences. Often we are asked to wear different hats which may include teaching, event planning, program management, etc. Managing it all may be increasingly challenging given the current state of our global economy and higher education trends of increased enrollment and decreased resources. Facilitators will present different methods of thinking outside the box, the value of peer review, as well as share a current time management plan, when managing time and the necessary steps to be able to "do it all".

Flood Management fact: 2,600 households were asked to evacuate in Moorhead in addition to the entire Concordia College campus.

11:00-12:30pm Woodland North
Closing Keynote: Mr. Steve Stark — Drawn to Leadership

Lunch—Following Keynote

Sponsored by North Dakota State University

12:30pm

Conference Ends

Thank you for attending this year's NACADA
Region 6 Conference!
See you next year in Lincoln!

The NACADA Board of Directors would like to recognize the following individuals from your region who received awards from the annual NACADA Awards program and who serve the Association on the national/international level! Our heartfelt congratulations and appreciation to all!

2008 NACADA Award Winners from Region 6

Advising Technology Innovation – Winner

Power of Possibilities

Developed by: Power of Possibilities Workgroup, University of Nebraska-Lincoln

Outstanding Advising – Administrator, Certificate of Merit

Susan Darge, University of Minnesota Duluth

Outstanding New Advisor – Faculty, Winner

Sherrie Bossee, The University of South Dakota

Outstanding New Advisor – Primary Role, Winner

2008-2009 Current Leadership from Region 6

North Central Region 6 Chair, 2008-2010: **Pat Mason-Browne**, University of Iowa

Diversity Committee Chair, 2007-2009: **Jane Jacobson**, Iowa State University

Advising Business Majors Commission Chair, 2007-2009: **Deb Noll**, Iowa State University

Advisor Training & Development Commission Chair, 2007-2009: **Pat Folsom**,

2009 Election Results – Region 6

Professional Development Committee Chair, 2009-2011: **Pat Folsom**, University of Iowa

Congratulations to the
Tribal College and Aboriginal Advisor
Grant Winner that has been awarded to:
Audrey Richard, University of Manitoba

Congratulations to the Graduate Student Scholarships that have been awarded to:

Wei Dong Zhang, Maharishi University of Management
Angela Rivera, Minnesota State University-Mankato
Elizabeth Kalinowski, Minnesota State University Moorhead
Sarah Kylo, Minnesota State University Moorhead

A special thanks to:



We would like to thank these area businesses for their generous contributions, and we encourage you to offer your support to these businesses during and after the conference.

Bear Creek Coffee
www.bearcreekcoffee.com

Café Chocolat
www.chipperzcottage.com

The Chocolate Frog Gift Shop
www.chocolatefrogfargo.com

Country Greenery
www.countrygreenery.com

Giant Interactive Sales
www.giantseeds.com

Maple River Winery
www.mapleriverwinery.com

MoJo Roasters
www.mojoroast.com

North Dakota Mill
www.ndmill.com

Nordic Needle
www.nordicneedle.com

Prairie Yarns
www.prairiejarns.com

Scheels All Sport
www.scheels.com

Stampin' Up!
www.stampinup.com

Sturdiwheat
www.sturdiwheat.com

Sweet Dreams Confections
www.sweetdreamsconfections.com

Vintage Point
Fargo, ND

Waggy Tail Treats
www.waggytailtreats.com

Willi Nilli
www.willinilli.biz

Zandbroz Variety
www.zandbroz.com

The Conference Planning Committee would like to thank the following for their support:

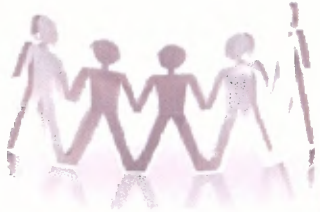
- The Doublewood Inn for hosting our Regional Conference, as well as Kari Solberg for her exceptional assistance in this process.
- The Fargo-Moorhead Convention and Visitors Bureau
- The Frying Pan
- ACT for sponsoring the tote bags
- Proposal Readers
- Conference Volunteers
- Diane Matteson and the Executive Office staff
- North Dakota State University
- Concordia College
- Minnesota State University Moorhead
- Minnesota State Community and Technical College
- Charlie Nutt, Executive Director, NACADA
- Terry Musser, Board Member
- Pat Mason-Browne, Region 6 Chair
- Steve Stark

Due to the flooding situation the Opening Reception was moved from the Moorhead Hjemkomst Center as they had taken on water in their lower level. We wish the Hjemkomst Center staff a quick recovery with their flood repairs.

Flood Management fact: NACADA donated the \$100 reception deposit to the Hjemkomst Center for flood recovery efforts.



NOTES



A series of horizontal lines for writing notes, spanning most of the page width. A blue vertical bar is on the right side.

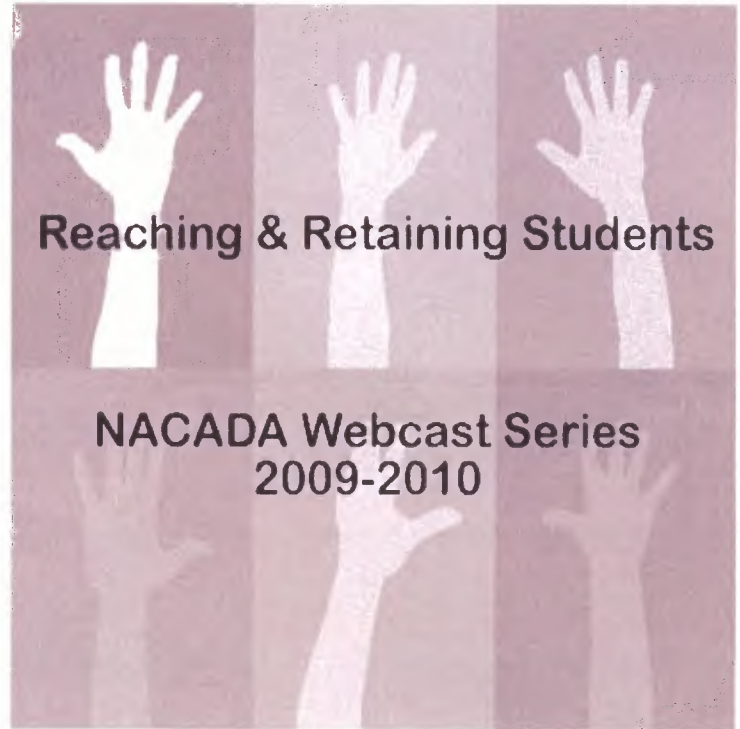
Upcoming NACADA Events



33rd Annual Conference
on Academic Advising

SAVE THE DATE!
September 30 - October 3, 2009

**Academic Advising:
Deep in the Heart of Student Success**
September 30-October 3, 2009

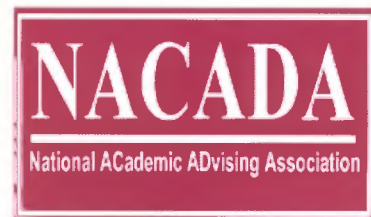


Advising Student-Athletes:

A Model for Academic Success Seminar

May 16 - Charleston, WV

June 27 - Kansas City, MO

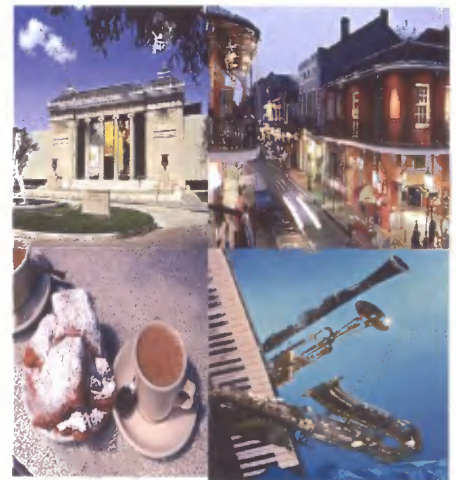


23rd Annual Academic Advising Summer Institute



Kansas City, MO -
June 28-July 3, 2009

New Orleans, LA -
July 26-July 31, 2009



For information on all NACADA Events visit www.nacada.ksu.edu?Events/index.htm



Scenes for Learning and Reflection:

An Academic Advising Professional Development DVD

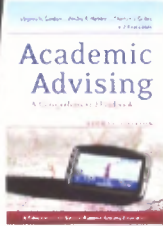


Item #V03

Filmed at Temple University, the DVD's 10 advising scenes were suggested by NACADA Commission and Interest Group members. All of these "vignettes" feature real students and professional and faculty advisors as they deal with important advising issues faced on today's campuses. Suggested discussion questions at the end of each three-minute scene provide viewers with starting points for conversations on how these topics relate to their own campus policies and procedures.

For more information visit:

www.nacada.ksu.edu/Videos/index.htm#three



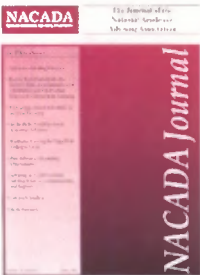
Academic Advising: A Comprehensive Handbook — 2nd edition (Item #P12)

One of the challenges in higher education is helping students achieve academic success while ensuring that their personal and vocational needs are fulfilled. In this updated edition, more than thirty experts offer their knowledge in what has become the most comprehensive, classic reference on academic advising. Here experts in the field explore the critical aspects of academic advising and provide insights for all who advise or oversee advising.



The New Advisor Guidebook: Mastering the Art of Academic Advising Through the First Year & Beyond

New academic advisors note that watching a skilled veteran advisor with students is like watching an artist at work. Their conferences are "jam-packed" with information, yet have the ease and fluidity of a conversation. Until now becoming an excellent advisor has been entirely an experiential journey. Now there is a guidebook that can help new professionals master the art of academic advising.



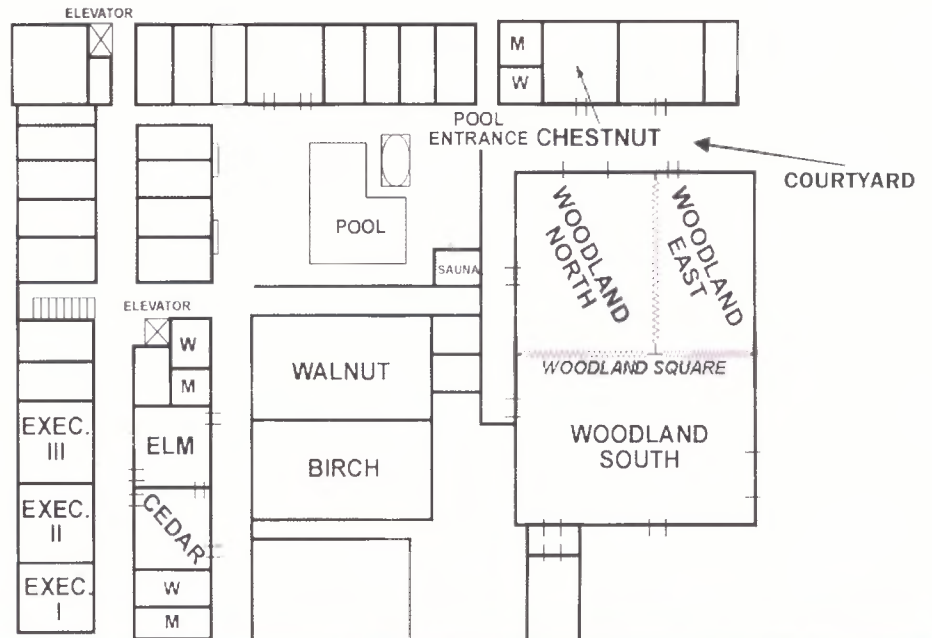
The *NACADA Journal* is the biannual refereed journal of the National Academic Advising Association. It exists to advance scholarly discourse about the research, theory and practice of academic advising in higher education.

Watch for your copy in your mailbox later this Spring!

www.nacada.ksu.edu/Resources/index.htm

Don't forget to pick up an order form at the NACADA display table so you may receive special conference pricing discounts for most NACADA publications. If all order forms have been taken, please contact Bev Martin at bmartin@ksu.edu for a copy.

HOTEL MAP



SCHEDULE AT A GLANCE

Wednesday, May 6, 2009

| | | |
|-------------|---|----------------|
| 1:00-6:30pm | Registration | Courtyard |
| 2:00-3:00pm | NACADA Leadership Training | Cedar |
| 2:00-4:00pm | Pre-Conference Workshops | Birch |
| 4:10-5:00pm | First Time Attendee NACADA Orientation | Cedar |
| 5:00-7:00pm | Dinner on your own | |
| 7:00-8:30pm | Opening Session—Welcome & Keynote Address | Woodland North |
| 8:30-9:30pm | Reception | Woodland South |

Thursday, May 7, 2009

| | | |
|-----------------|---|----------------|
| 7:30-8:30am | Breakfast | Woodland South |
| 8:30-9:30am | Concurrent Session 1 | See page 5 |
| 9:45-10:30am | NACADA Update and Feedback Session | Woodland North |
| 10:30-11:00am | Break | Courtyard |
| 11:00-12:00 | Concurrent Session 2 | See page 6 |
| 12:10-2:00pm | Lunch and Region Business Meeting | Woodland South |
| 2:00-3:00pm | Concurrent Session 3 | See page 7 |
| 3:00-3:30pm | Break | Courtyard |
| 3:30-4:30pm | Concurrent Session 4 | See page 8 |
| 5:30 start time | F abulous M eals-sign up at hospitality table | |

Friday, May 8, 2009

| | | |
|--------------|-------------------------|----------------|
| 7:30-8:30am | Breakfast | Woodland South |
| 8:30-9:30am | Concurrent Session 5 | See page 9 |
| 9:45-10:45am | Concurrent Session 6 | See page 10 |
| 11:00-12:30 | Closing Keynote & Lunch | Woodland North |